



# MONTHLY MEMBERSHIP PROGRESS REPORT

District 325A2

Results as of: 6/30/2017

GMT: OPEN

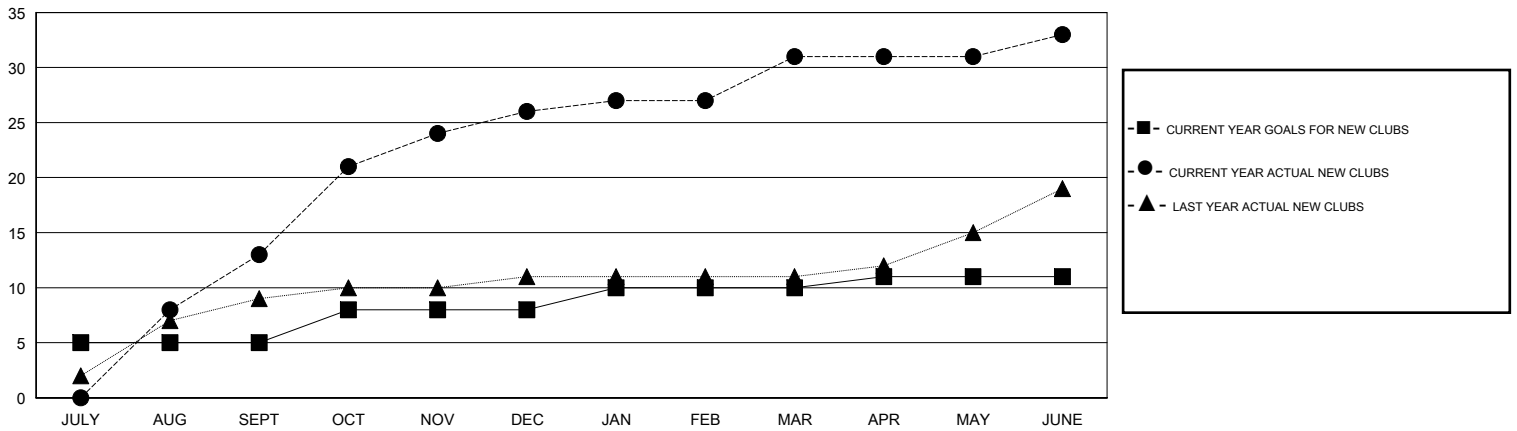
LOCATION NEPAL

GMT CA

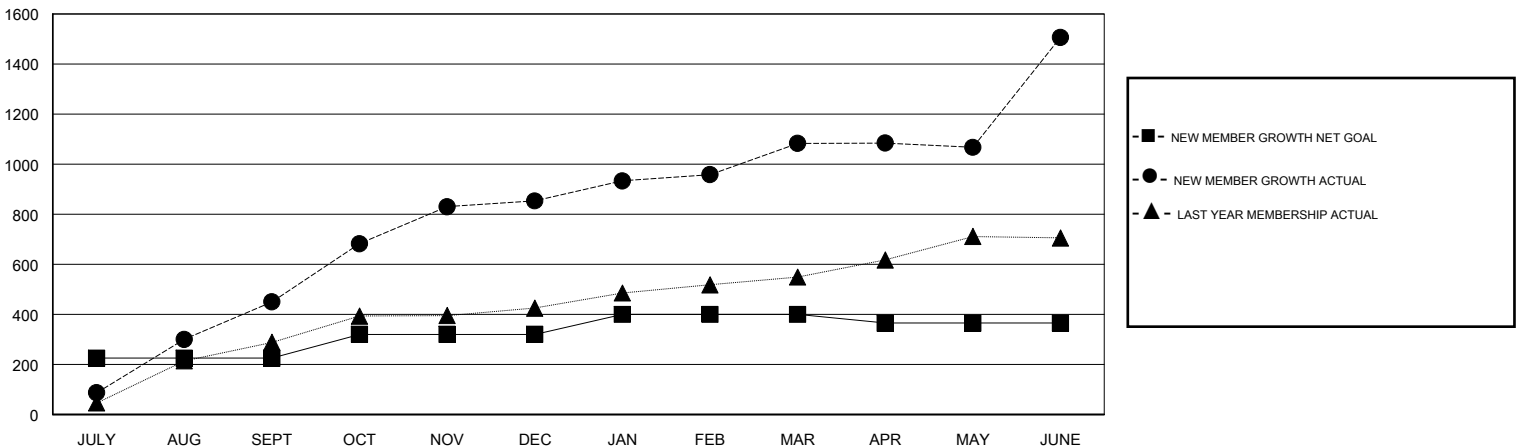
| Clubs                 |               |           |               |
|-----------------------|---------------|-----------|---------------|
| RESULTS FOR 2016-2017 |               |           |               |
| QUARTER               | NEW CLUB GOAL | NEW CLUBS | DROPPED CLUBS |
| JULY/AUG/SEPT         | 5             | 13        | 0             |
| OCT/NOV/DEC           | 3             | 13        | 1             |
| JAN/FEB/MAR           | 2             | 5         | 0             |
| APR/MAY/JUNE          | 1             | 2         | 1             |

| Members               |  |  |  |
|-----------------------|--|--|--|
| RESULTS FOR 2016-2017 |  |  |  |
| QUARTER               | NEW MEMBER GROWTH NET GOAL (not reinstated or transfers) | NEW MEMBER GROWTH ACTUAL (not reinstated or transfers) | DROPPED MEMBERS ACTUAL (including transfers) |
| JULY/AUG/SEPT         | 225  | 534  | 84   |
| OCT/NOV/DEC           | 95   | 515  | 112  |
| JAN/FEB/MAR           | 80   | 283  | 53   |
| APR/MAY/JUNE          | -35  | 787  | 364  |

GOALS AND ACTUAL NEW CLUBS CUMULATIVE



GOALS AND ACTUAL MEMBERS CUMULATIVE



|                        |   |                                       |
|------------------------|---|---------------------------------------|
| DROPPED CLUBS: 2       | 133 CLUBS OF 156 ADDED 1 OR MORE NEW MEMBERS              | <b>GENDER DISTRIBUTION</b>            |
|                        |   | MALE 3,505 (73.25%)                   |
|                        |   | FEMALE 1,280 (26.75%)                 |
| <b>DROPPED MEMBERS</b> | <a href="#">CLICK HERE FOR CUMULATIVE MEMBERSHIP DATA</a> | TOTAL FAMILY UNIT MEMBERS 2,328       |
| DECEASED 1             |   | FAMILY MEMBERS PAYING HALF DUES 1,405 |
| CLUB CANCELLED 36      |   |                                       |
| OTHER 576              |   |                                       |
| <b>TOTAL 613</b>       |   |                                       |